

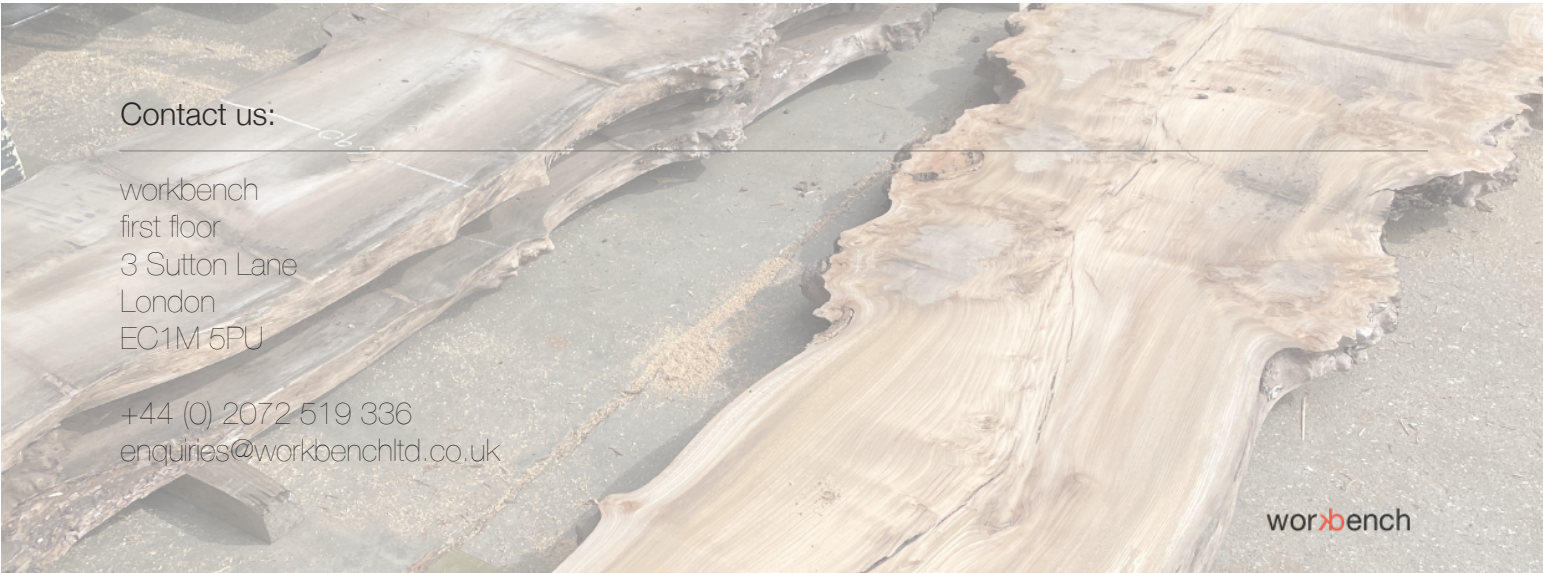


Qualifying Explanatory Statement in
support of PAS 2060:2014 Certification
provided by JCL Workbench Ltd

18 January 2023

Contents

- 001 Introduction
- 002 Declaration of Achievement of carbon neutrality
- 003 Appendix A Carbon Footprint Assessment
- 004 Appendix B Carbon Footprint Management Plan
- 005 Appendix C Carbon Offset Strategy
- 006 Appendix D Scope 3 Emissions



Contact us:

workbench
first floor
3 Sutton Lane
London
EC1M 5PU

+44 (0) 2072 519 336
enquiries@workbenchltd.co.uk

Introduction

This document forms the Qualifying Explanatory Statement to demonstrate Workbench has achieved carbon neutrality under the guidelines of PAS 2060:2014 and is committed to achieving carbon neutrality under the guidelines of PAS 2060:2014.

This Qualifying Explanatory Statement contains information pertaining to the subject's carbon neutrality. Any and all information herein is believed to be correct at the time of publishing. Should any information come to light that would affect the validity of the statements herein, this document will be updated to accurately reflect the current status of any carbon neutral statement made by Workbench.

PAS 2060 Information Requirement	Information as it relates to Workbench
Entity making PAS 2060 declaration:	Workbench
Subject of PAS 2060 declaration:	The office and business operated by Workbench Company reg no. 06962631
Description of Subject:	<p>Furniture and joinery for commercial & public spaces</p> <p>Workbench was formed in 2009, we are a skilled team of designers and makers who bring a lifetime's knowledge and experience to produce the finest British furniture and specialist joinery for UK and International clients.</p> <p>Working in the commercial and public sectors, we partner with Architects, Design Practices, Furniture Dealers and Main Contractors, providing innovative and outstanding products, services and value to our clients.</p> <p>SIC code: 31010 - Manufacture of office and shop furniture 31090 - Manufacture of other furniture</p>
Rationale for selection of the subject:	The scope and subject of this PAS2060 includes all emissions based on the operational control principle defined in the 2014 WRI GHG Protocol – Corporate Accounting Standard.
What type of conformity assessment has been/is to be undertaken?	Third party assessment by Carbon Lens Ltd
Baseline date for PAS2060 programme	1st June 2021 to 31st May 2022
Achievement Period	1st June 2021 to 31st May 2022
Commitment Period	1st June 2021 to 31st May 2023

Declaration of achievement of carbon neutrality

PAS 2060 Information Requirement	Information as it relates to Workbench
State the period during which the entity is demonstrating achievement of carbon neutrality of the subject.	Application period: 1st June 2021 to 31st May 2022. Total: 1,081 tCO₂e
Which method, as defined by PAS 2060, has been followed to achieve carbon neutrality?	Method 1: Demonstrating carbon neutrality
How have the reductions in GHG emissions during this period been achieved?	As this is the baseline period measured in retrospect then 100% of the emissions have been offset
Location of the GHG emissions report supporting this claim.	Appendix A of this document
Location of the details describing internal reductions achieved during the period.	Appendix B of this document
Location of the details describing procurement of renewable electricity and bio-methane gas achieved during the period.	Appendix C of this document
Location of the details describing the carbon offsets.	Appendix D of this document

Signatories	Name	Signature	Date
Name of 3rd party part assessor	Richard Bromley		18 January 2023
Name of senior internal representative	Wendy Graham		2 April 2023



Appendix A Carbon Footprint Assessment

Green house gas emissions: The below are all location based emissions for the period 1st June 2021 to 31st May 2022

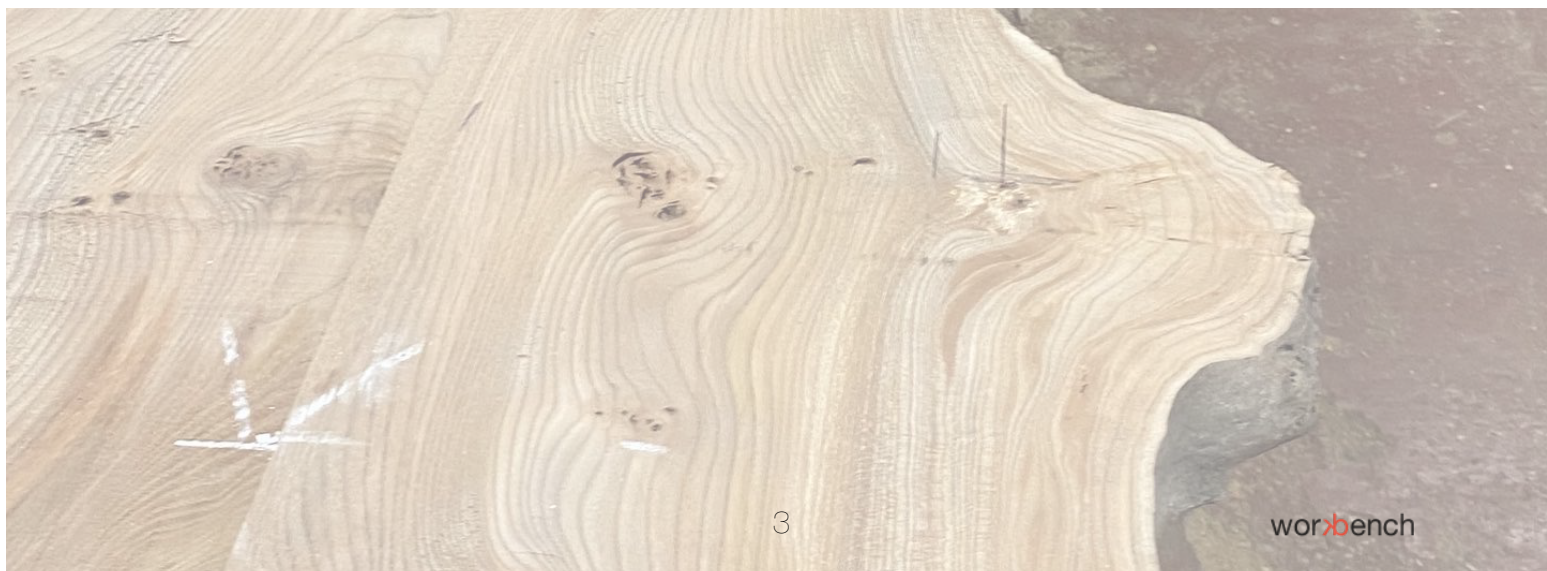
Aspect	Tonnes CO2e	Scope 1	Scope 2	Scope 3
Electricity	2.30		1.70	0.60
Transport	93.83			93.83
Stass Commuting	10.01			10.04
Working from Home	2.00			2.00
Waste	0.90			0.90
Water	0.20			0.20
Air Con Cooling F Gas	0.003	0.003		
Purchases	971.76			971.76
Total	1,081	0.003	1.70	1,079.33

Standard and methodology used

Workbench Greenhouse Gas (GHG) Emissions are categorised as Scope 1, 2 or 3 as referred to in the WBCSD-WRI Greenhouse Gas Protocol (revised edition, dated March 2014) emissions in carbon dioxide equivalent (CO2e) for Scopes 1 and 2 are calculated using the conversion factors listed in the 2020 BEIS Greenhouse Gas Conversion Factors and ICE Database Conversion Factors.

Data Quality/Confidence

Data from GHG emissions sources contributing over 90% of the subject's footprint was obtained via (1) Weights of purchased materials, (2) Bills, (3) Subcontractor information (4) Purchase receipts, with appropriate National or International emissions factors applied. The table overleaf details the level of confidence in the data assessed.



Data Quality/Confidence:

Scope	Category		Data				Comments	Tonnes CO2e	%	
	Description	Applicable	In Scope?	Included?	Available?	Quality				
Scope 1		Direct emissions from owned/controlled operations						0.003	0%	
Scope 1	Company Facilities	Yes	Yes	No	No	N/A	No gas		0%	
Scope 1	Company Vehicles	No	No	No	No	N/A	No company vehicles listed		0%	
Scope 1	Fugitive Emissions	Yes	Yes	Yes	Yes	Low	No data on air con gas replacement	0.003	0%	
Scope 2		Indirect emissions from the use of purchased electricity, steam, heating, and cooling						2.3	0%	
Scope 2	Purchased Electricity	Yes	Yes	Yes	Yes	Good	Consumption figures provided	2.3	0.2%	
Scope 2	Steam	No	No	No	No	N/A	Data not available		0%	
Scope 2	Heating	Yes	Yes	No	No	N/A	Included in electricity		0%	
Scope 2	Cooling	Yes	Yes	No	No	N/A	Data not available		0%	
Scope 3		Upstream Scope 3 Emissions (Supply Chain)						984.65	91%	
Scope 3	01	Material Purchased by Weight	Yes	Yes	Yes	Yes	High	Material weights provided	312.7	29%
Scope 3	02	Workshop & Subcontractor Purchases	Yes	Yes	Yes	Yes	Low	Calculated from spend	565.18	52%
Scope 3	03	Water & Sewerage	Yes	Yes	Yes	Yes	Low	Estimated using industry averages	0.2	0%
Scope 3	04	Working from home	No	No	Yes	Yes	Fair	Consider a staff survey	2.0	0%
Scope 3	05	Waste generated in Operations	Yes	Yes	Yes	Yes	Fair	Estimated	0.9	0.1%
Scope 3	06	Purchased Office Services & Products	Yes	Yes	Yes	Yes	Fair	From data provided	93.63	9%
Scope 3	07	Employee commuting	Yes	Yes	Yes	Yes	Good	Information provided	10.04	1%
Scope 3	08	Upstream leased assets	Yes	Yes	No	No	N/A	No data on office leases		0%
Scope 3		Downstream Scope 3 Emissions						93.83	9%	
Scope 3	09	Downstream transportation & distribution	No	No	Yes	Yes	Fair	Calculated from spend	93.83	9%
Scope 3	10	Processing of sold products	No	No	No	No	N/A	Not relevant		0%
Scope 3	11	Use of sold products	No	No	No	No	N/A	Not relevant		0%
Scope 3	12	End-of-life treatment of sold products	No	No	No	No	N/A	Not relevant		0%
Scope 3	13	Downstream leased assets	No	No	No	No	N/A	Not relevant		0%
Scope 3	14	Franchises	No	No	No	No	N/A	Not relevant		0%
Scope 3	15	Investments	No	No	No	No	N/A	Not relevant		0%
								1,080.8	100%	

Appendix B Carbon Footprint Management Plan

Historical Emission Reduction Progress for the Previous Period

Maintained certification to ISO 14001:2015

We have actively considered materiality of the core boards we use within our furniture production and prioritise those with lower carbon footprint. We have reduced our use of single use plastic in our packaging and product protection.

To raise profile as an environmentally responsible furniture provider we took part in Clerkenwell Open 2021 Finance to update our showroom, time, and merchandise. Workbench Improved client awareness of our product and was able to promote our environmental focus.

01. More aware of our supplier impacts database to track supplier process and environment.
02. Remove as much single use packaging as possible.
03. Improve the technical knowledge of our Workbench team

On-going Emissions Reduction Plan – For the PAS 2060 Commitment Period

The ongoing plan to reduce emissions over the commitment is summarised below:

Workbench has completed a Net Zero action plan with the aim of achieving Net Zero by 2040.

Engage with suppliers to better understand their carbon footprint and discuss options to reduce their impact.

Review the options for full lifecycle and design for circular economy.

A new process has been put in place to measure the consumption of materials, this will allow better clarity and accurate measurements to calculate emissions from materials purchased.

The full carbon management plan can be found in the Carbon Footprint And Detailed Action Plan for Workbench Jan 23.

Action plan is available on request enquiries @workbenchltd.co.uk

Conformance to the Carbon Footprint Management Plan

The following measures will be followed to assess performance against the plan.

A six monthly progress update session will be held between Carbon Lens Ltd and Workbench during the commitment period to ensure that Workbench is on track to lower emissions materially during the commitment period.

Appendix C Carbon Offset Strategy

The following information covers the offset strategy for the period of carbon neutrality.

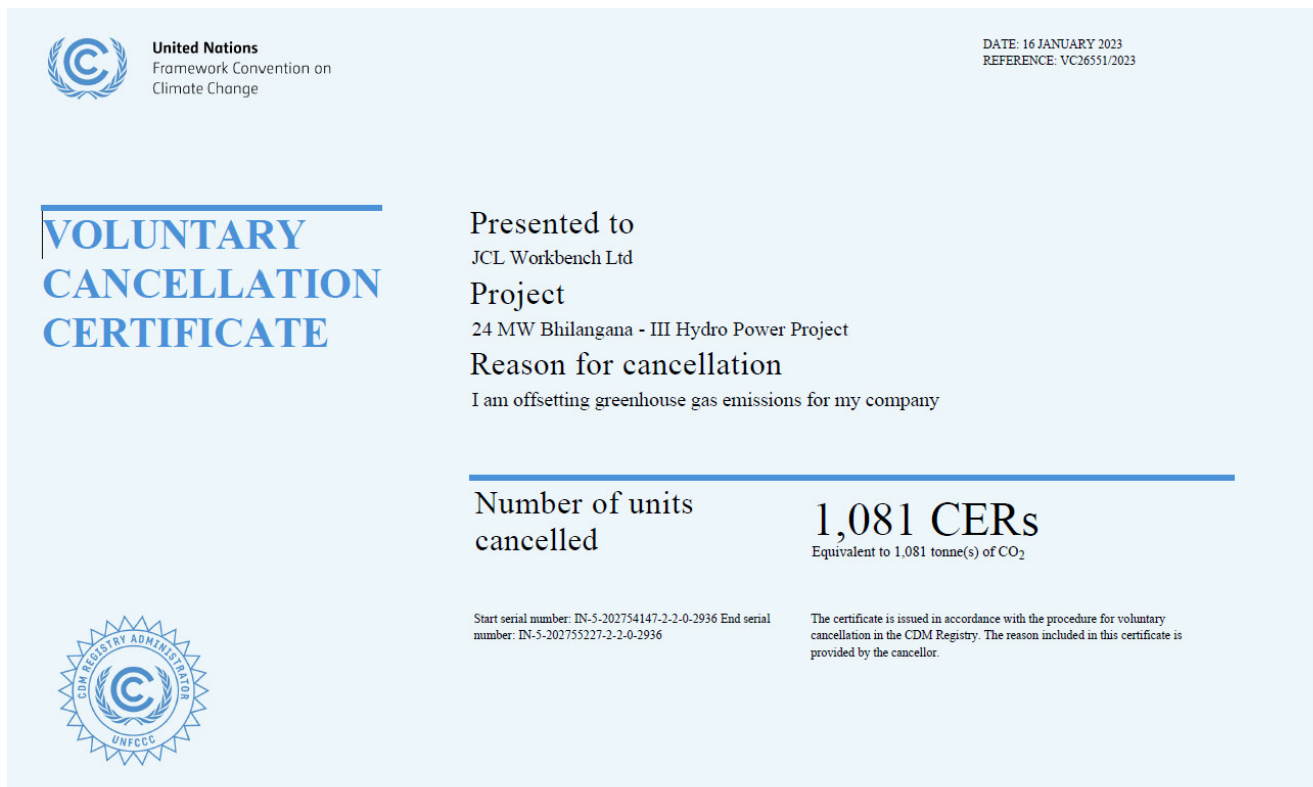
Quantity of GHG emissions to be offset: 1,081 tCO₂e

Carbon offset strategy


Workbench have purchased Carbon Credits equating to 1,081 tCO₂e, which is the full amount required.

Workbench have acquired credits via the UN Framework Convention on Climate Change.

The specific project invested in is detailed in the certificate below.



The image shows a 'Voluntary Cancellation Certificate' from the CDM Registry Administration. It is presented to JCL Workbench Ltd for the 24 MW Bhilangana - III Hydro Power Project. The reason for cancellation is 'I am offsetting greenhouse gas emissions for my company'. The certificate states that 1,081 CERs (Equivalent to 1,081 tonne(s) of CO₂) have been cancelled. It includes the start and end serial numbers and a note that the certificate is issued in accordance with the procedure for voluntary cancellation in the CDM Registry.

 **United Nations**
Framework Convention on
Climate Change

DATE: 16 JANUARY 2023
REFERENCE: VC26551/2023

**VOLUNTARY
CANCELLATION
CERTIFICATE**

Presented to
JCL Workbench Ltd


Project
24 MW Bhilangana - III Hydro Power Project

Reason for cancellation
I am offsetting greenhouse gas emissions for my company

Number of units cancelled **1,081 CERs**
Equivalent to 1,081 tonne(s) of CO₂

Start serial number: IN-5-202754147-2-2-0-2936 End serial number: IN-5-202755227-2-2-0-2936

The certificate is issued in accordance with the procedure for voluntary cancellation in the CDM Registry. The reason included in this certificate is provided by the cancellor.



Carbon Instrument details for:

Application period of carbon neutrality 1st June 2021 to 31st May 2022

- In total, 1,081 carbon credits relating to the period were offset.
- 100% of these carbon credits were canceled on the CDM registry.

Appendix D Scope 3 Emissions

In preparing the organisational GHG inventory for the purpose of carbon neutrality Carbon Lens Ltd worked with Workbench to adopt a traditional organisational boundary that includes all scope 1, 2 and a number of scope 3 emission sources. The scope 3 emissions included are those that Workbench has the greatest level of control over, such as emissions arising from business travel.

PAS 2060 recommends including all scope 3 emission sources that are technically feasible and cost effective to quantify, which for Workbench means that emissions from travel are included.

By their nature scope 3 emissions are modeled or estimates. This is one reason why Workbench chose to offset all their carbon footprint.

